





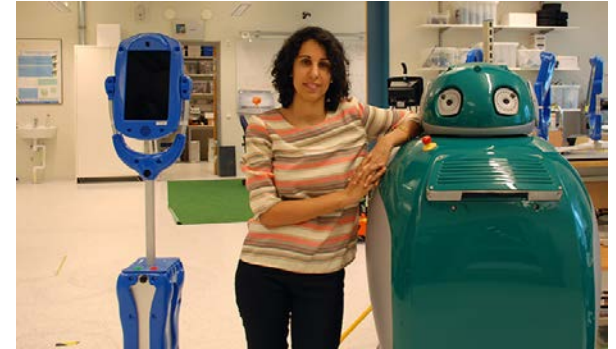
Keynote: AI och Robotik

Amy Loutfi

**Örebro University, Sweden
Center for Applied Autonomous Sensor Systems**

About me

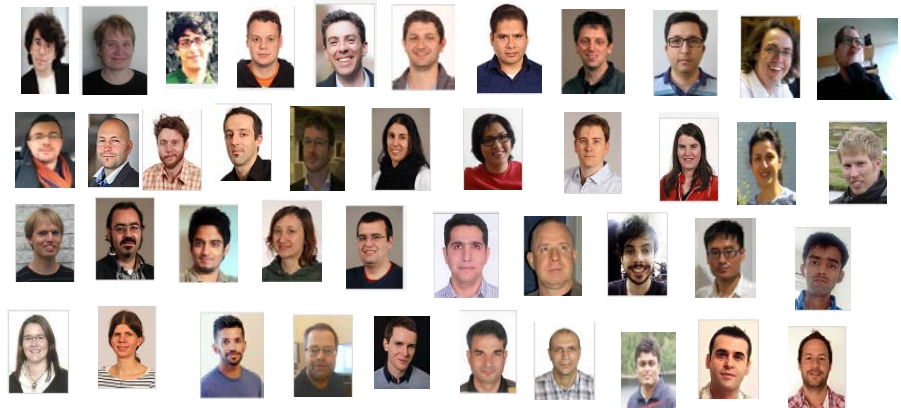
- 19XX - Born Saint John, Canada
- 1997 – Bsc. Electrical Engineering
- 1999 – Came to Örebro as a undergrad exchange student
- 2001 – Returned to Örebro as a Ph.d student
- 2006 – Post-doc Spain
- 2009 – Coordinated National projects in AI
- 2014 – Coordinated two EU projects to completion
- 2016 – Head of Center for Applied Autonomous Sensor Systems, Örebro University (AASS)



Center for Applied Autonomous Sensor Systems (AASS)

- **50+** Researchers
- **7** Professors
- **20** Ph.d students
- **3** Research Labs
- **3** Education Programs
- **2** KKS Profiles since 2001
- **19** EU projects since 2009

AASS performs research in AI and autonomous systems



Utbildning

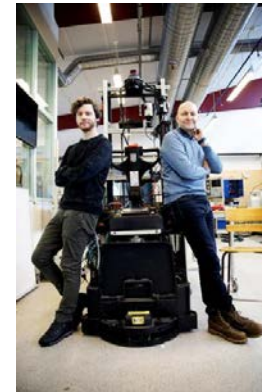
Forskning

Samverkan

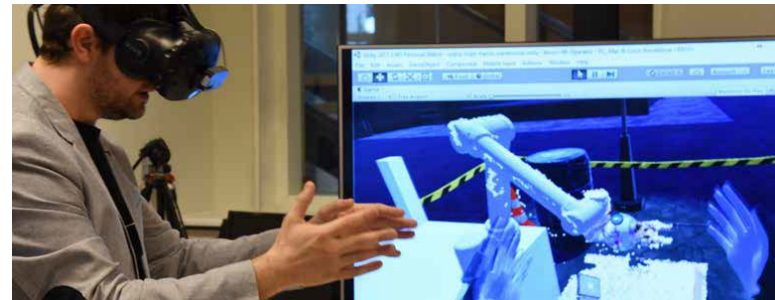
A Swedish and European Research Center

Dust-Bot
DIADEM
Handle
RobLoG
MOnarCH
GiraffPlus
Gert
ROBOT-ERA
RUBICON
RACE

Spencer
ExCITE
Saapho
SmokeBot
SOCRATES
ILIAD
MoveCare
CARESSES



- Health and Ageing
 - **(H2020) MoveCare, Carresses**
 - **(ITN) Socrates**
 - **(Vinnova) AI Decsion Support**
 - **(KKS Sidus) E-care@Home**
- Environmental Inspection
 - **(FP7) SmokeBot**
- Warehouse Logistics
 - **(H2020) Iliad**
- Smart Industries
 - **(EU Chist-era) Reground**
 - **(VR) Grounding Language for Robots**
 - **(KKS) AMICI**
 - **(Vinnova) Iqmobility**
 - **(Vinnova) TracMac**
 - **(KKS Sidus) AIR**
 - **(KKS) Semantic Robots**

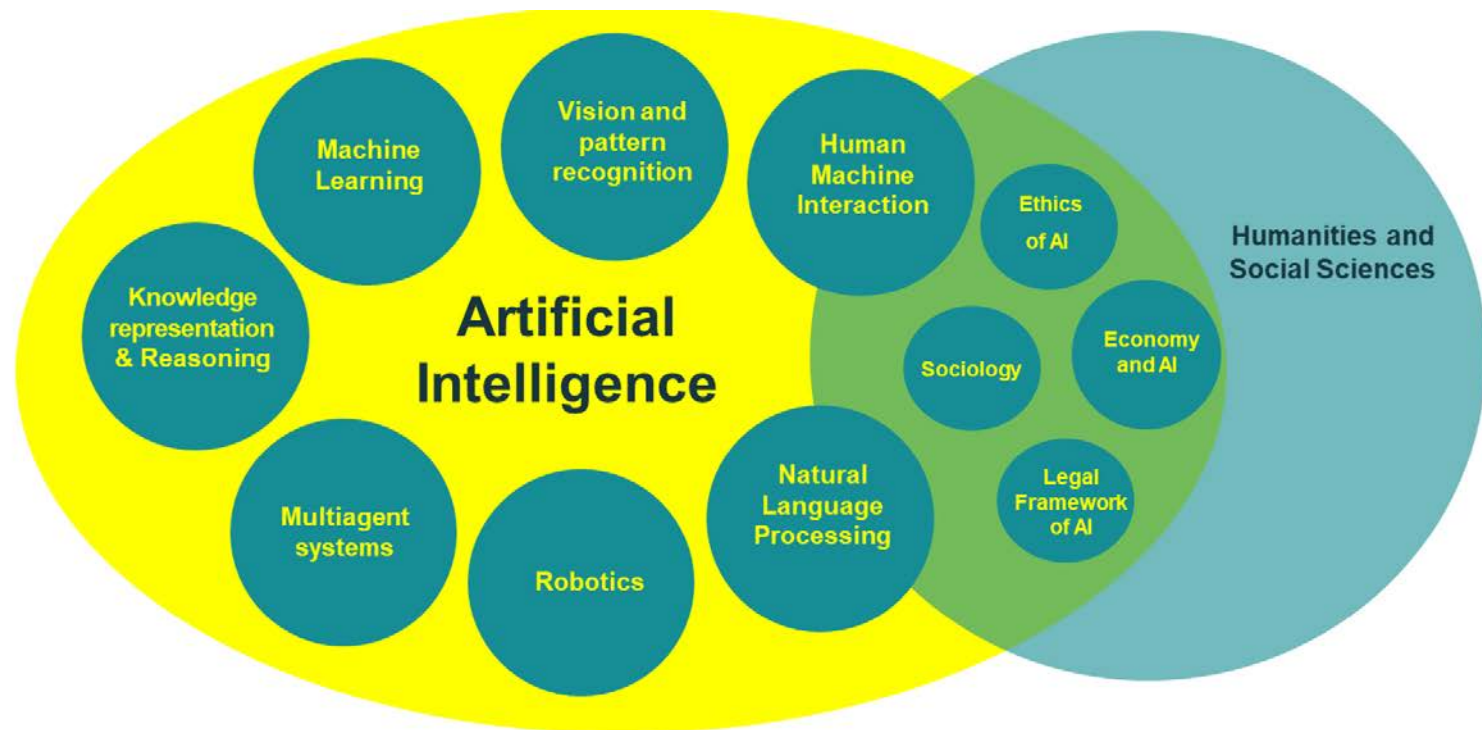




What is AI?

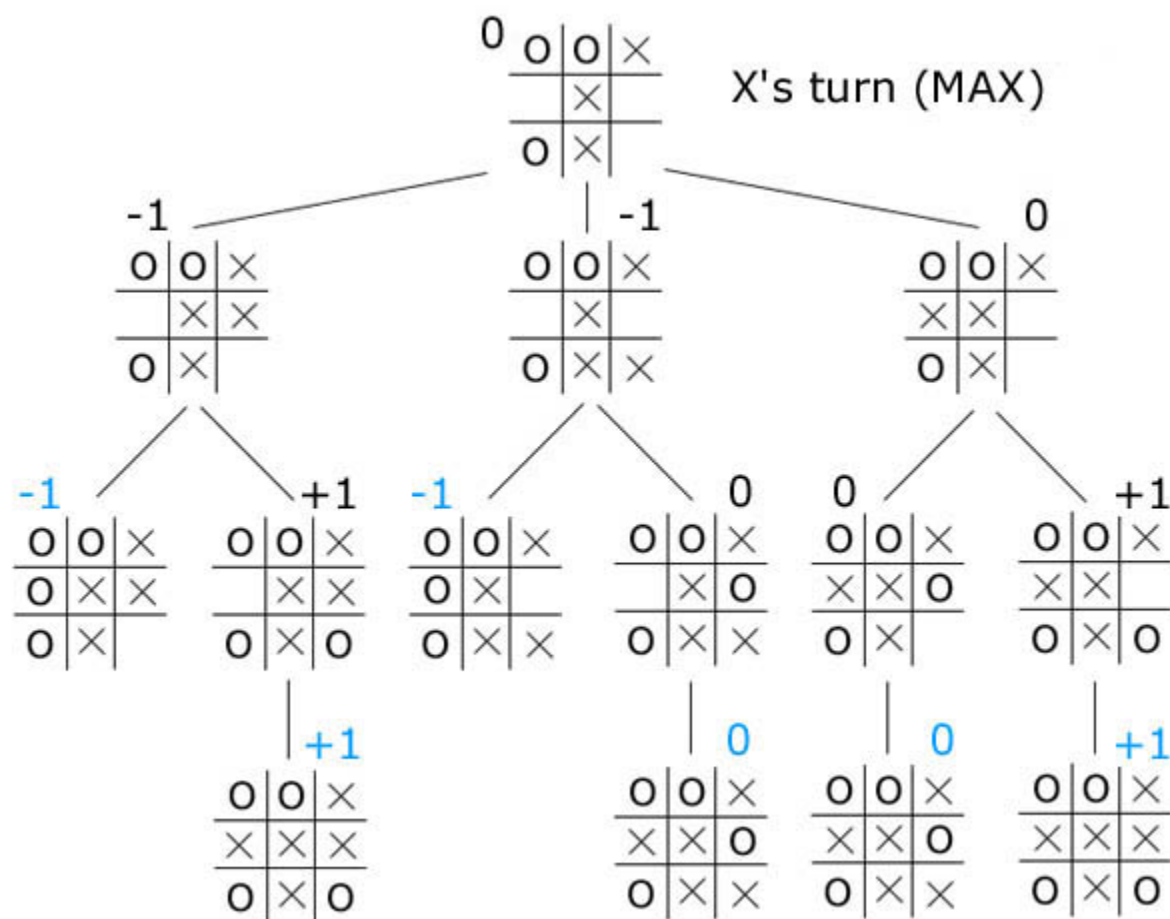
What is AI?

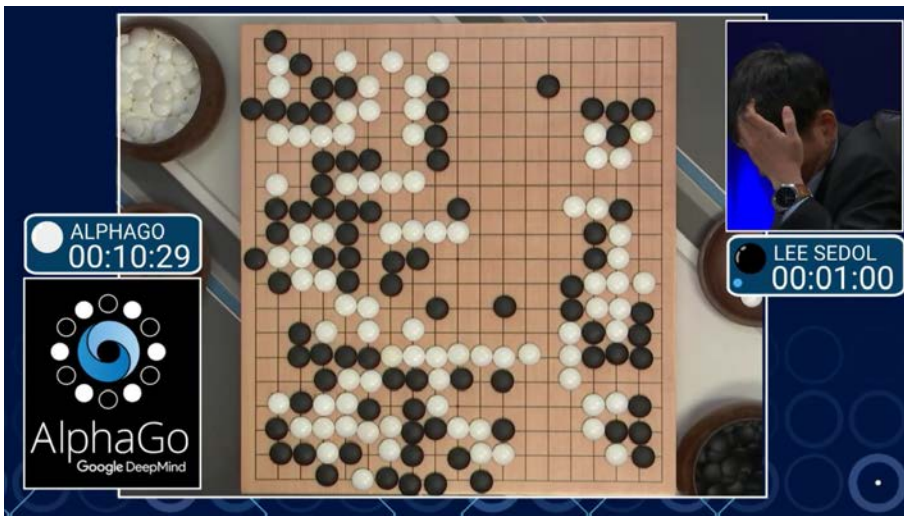
“Artificial Intelligence is the science and engineering of making intelligent machines, especially intelligent computer programs.” John McCarthy, Stanford



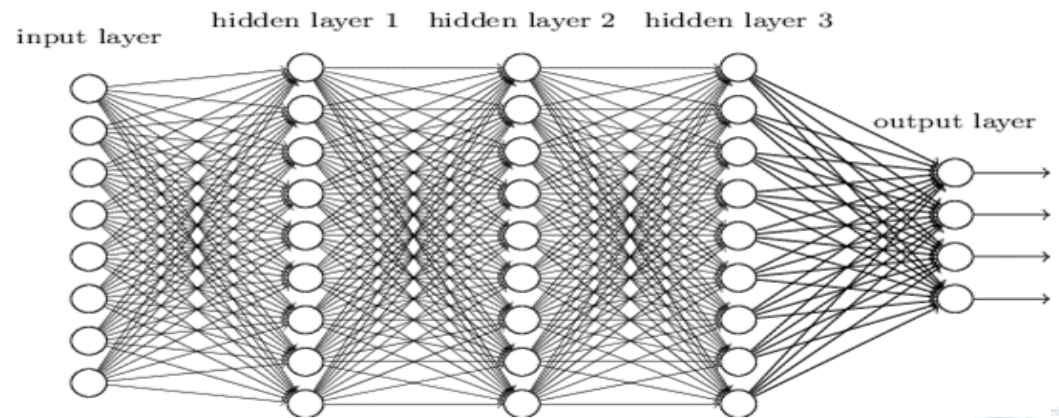
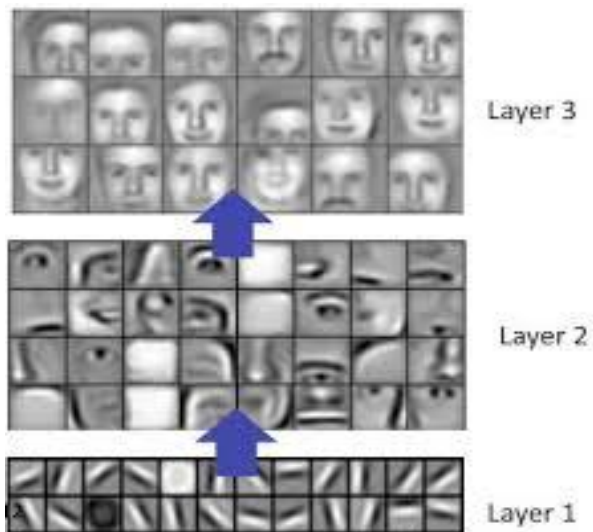


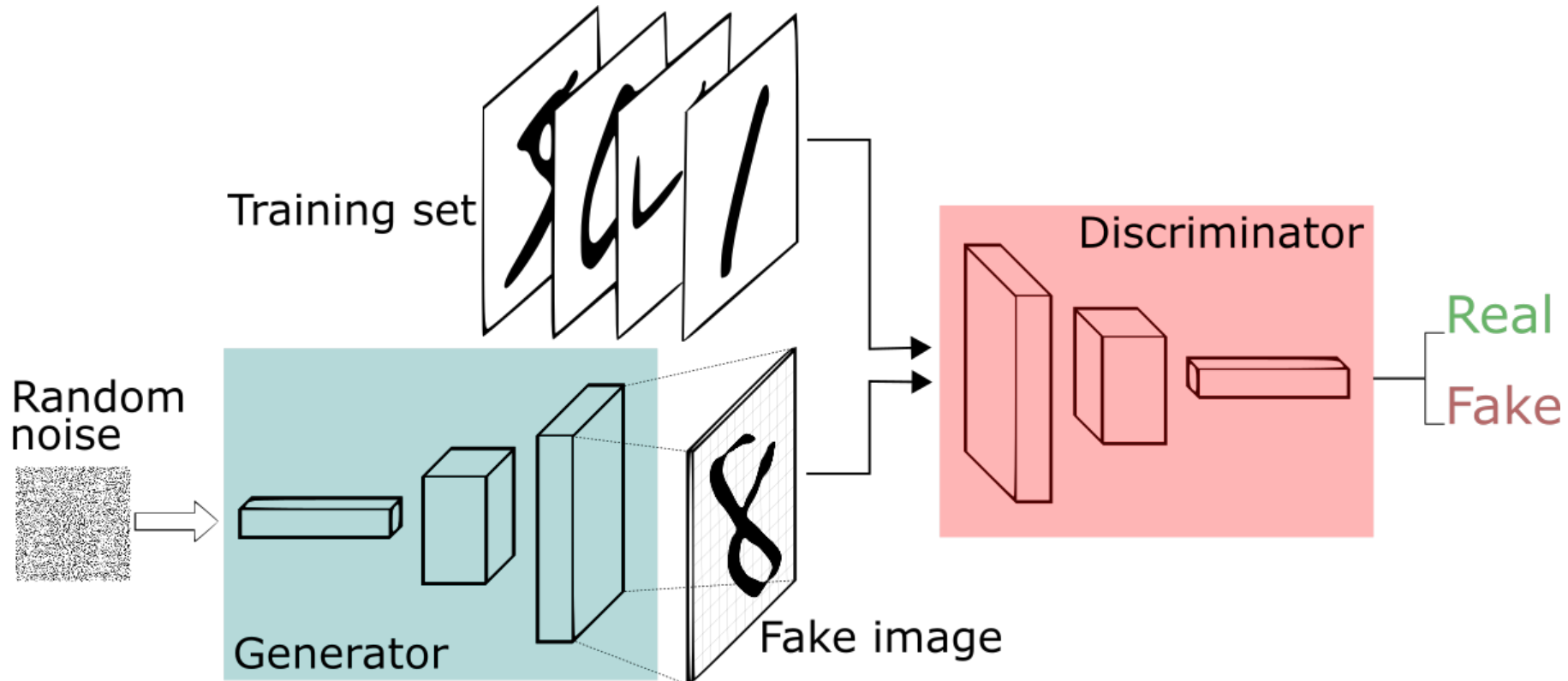
What does AI Look Like?





AI in 2016





AI in 2019



Polygon Landscape Paintings ...
mymodernmet.com



Marlise le Roux - Landsca...
pinterest.com



Landscapes Art | Fine Art Ame...
fineartamerica.com



Abstract landscapes Painti...
saatchiart.com



art, paintings, prints, Main...
dianebeem.com



Edward Henry Potthast Beach Sc...
dhgate.com



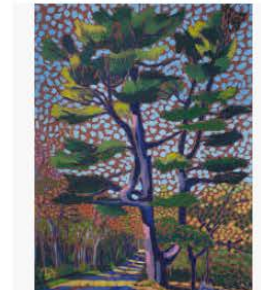
Sunset On The Rocks Oil Pain...
pixels.com



Claude Monet paintings Lands...
aliexpress.com



Coral Belles - Painting of L...
arte-cera.com



art, paintings, prints, Main...
dianebeem.com



4th Annual Landscapes Art...
artsy.net



13 tips for better impasto landsc...
artistsandillustrators.co.uk

<https://github.com/robbiebarrat>

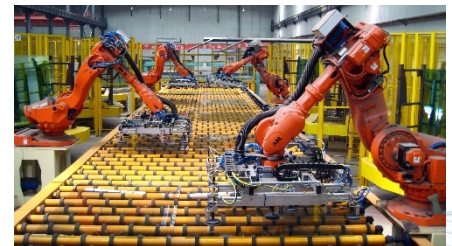
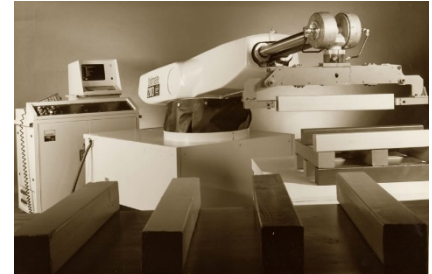




When AI meets robotics

History of AI and Robotics

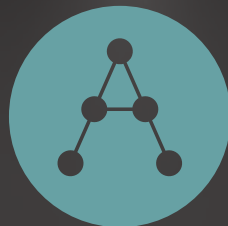
- Large Amount of Research in 1960s
 - Simple Problem Solver, logic theorem prover
 - People got too enthusiastic about AI
- First AI Winter (70s)
- First Revival (80s)
 - Expert Systems, and \$\$\$ in business
- Second AI winter (85-90)
- Second Revival (90s-now)
 - Increasing computer power, multi-disciplinary approach, focus on subproblems



Don't have to program everything



Improves performance over time by practicing



AI.MEE

TESTBED FOR
AUTONOMOUS INTELLIGENT MACHINES
— FOR ENTERPRISE AND EXPLORATION

2017-2020



VÅRT UPPDRAG



*“Målet med AI.MEE är att skapa långsiktig utveckling och tillväxt i Örebroregionen.
Det gör vi genom att tillsammans med regionens företag och Örebro universitet ta
fram konkreta tekniska lösningar och plattformar inom AI och autonoma system,
som många kan dra nytta av.”*





AI.MEE CASE AUTOHIC

Status: **COMPLETED**

Demonstrator: **ROBOTLAB**

Continuation:

AUGMENTOR Case

AFA Application (Accepted for full submission)

Publications:

* **Automatica, IEEE THMS**





AI.MEE CASE

F2 SIM





AI.MEE CASE

Co-ROB

Marjan vill öppna AI:s "svarta låda"



Marjan Alirezaie, AI-forskare vid Örebro universitet, ska försöka göra artificiell intelligens mer transparent.

AI-metoder som djupinlärning fungerar utmärkt för uppgifter som att diagnosticera hudcancer. Problemet är att vi inte riktigt vet hur, eller varför, de fungerar. Genom att kombinera två olika AI-metoder hoppas Marjan





AI.MEE CASE

Digitwin 2.0 (new)

Dynamic Digital Twins of buildings from the ground up.

Actors: Örebroporten, NCC, ViiNotion, Länsgråden,

Digitwin of Kulturkvartet

Sensor testing at Novahuset

Validation at Ängen





AI.MEE

Digitwin

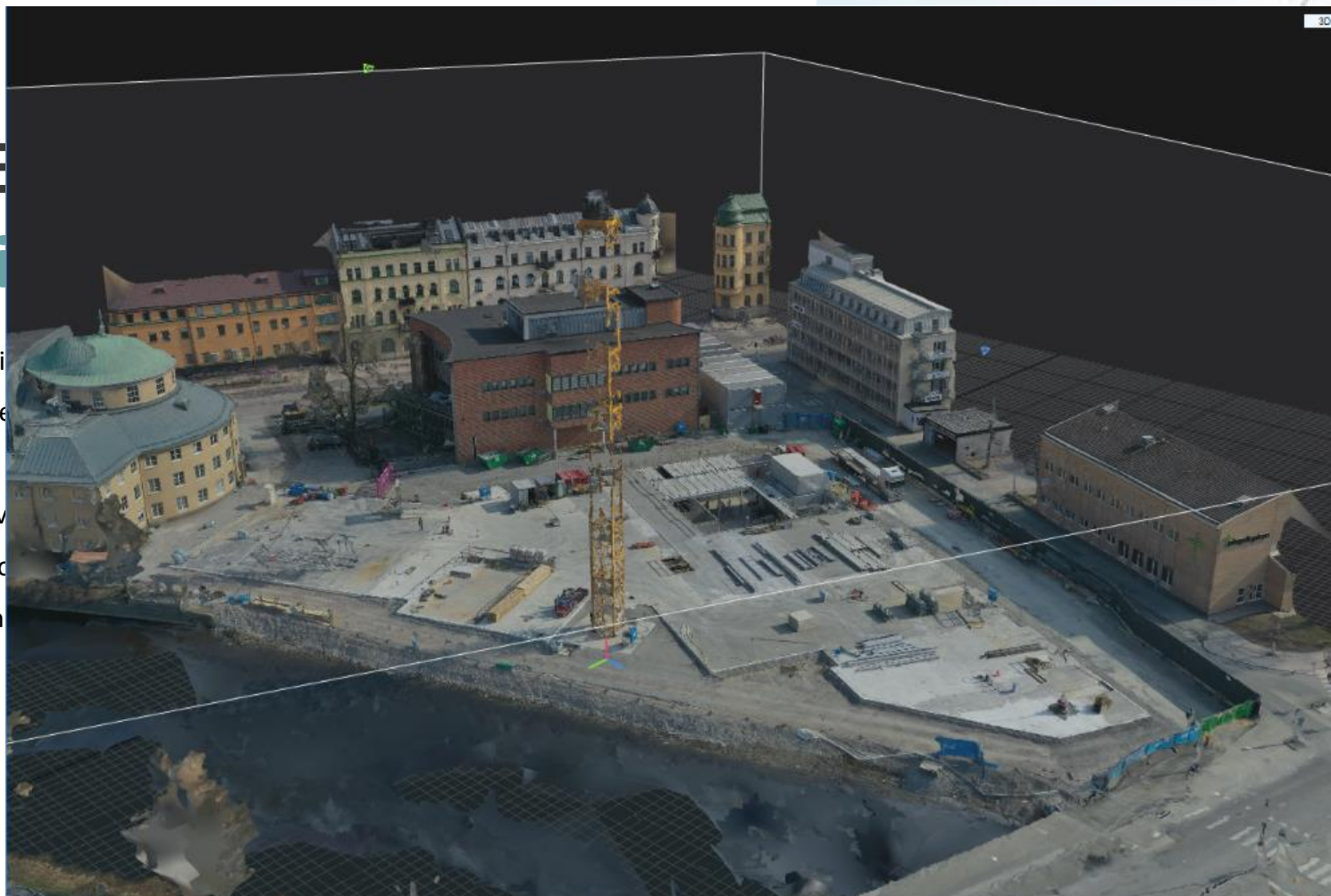
Dynamic Digital Twin

Actors: Örebroport

Digitwin of Kulturkv

Sensor testing at No

Validation at Ängen





AI.MEE CASE

AgTech

Multi-Robot Coordination without Coordination

Se mer i bifogad projektbeskrivning

- Our role is to ROS'ify' the platform
- American Company – Harvest Automation
(interested in finding European partners, and a selling office)
- Next Step: Press Release in May

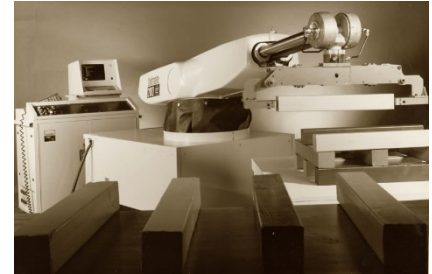


Competence Development

- Lifelong Learning to promote Collaboration

History of AI and Robotics

- Large Amount of Research in 1960s
 - Simple Problem Solver, logic theorem prover
 - People got too enthusiastic about AI
- First AI Winter (70s)
- First Revival (80s)
 - Expert Systems, and \$\$\$ in business
- Second AI winter (85-90)
- Second Revival (90s-now)
 - Increasing computer power, multi-disciplinary approach, focus on subproblems



Competence Development

- Lifelong Learning to promote Collaboration

Upcoming Courses

- Reinforcement Learning (RL)
- Search for Mobile Robots
- Machine Learning
- AI
- Autonomous Robots and ROS

- And many more.....



Thank You